

Created in 1884, MNAA-Museu Nacional de Arte Antiga, the main museum in Portugal, houses the most relevant public collection, from the 12th to the 19th century: painting, sculpture, silver, gold and jewellery, decorative arts – Portuguese, European, African and Oriental –, including the largest number of works classified as “national treasures”.

Among them, *The Panels of Saint Vincent*, by Nuno Gonçalves, and the *Belém Monstrance*, commissioned by king Manuel I and made with the gold brought by Vasco da Gama on his second return from India, symbols of 15th and 16th centuries Portuguese art, and notable paintings like *The Temptations of Saint Anthony*, by Jheronimus Bosch, *Saint Augustine*, by Piero della Francesca, *Saint Jerome*, by Albrecht Dürer, *Virgin and Child*, by Hans Memling, or *A Miracle of Saint Eusebius of Cremona*, by Raphael.

The museum has a magnificent garden, with restaurant, over the River Tagus.

OPENING TIMES

Tuesday to Sunday:
10am – 6pm

Closed: January 1, Easter Sunday,
May 1, June 13 and December 25

EDUCATION DEPARTMENT

Booking for guided visits
se@mnaa.dgpc.pt
T +351 213 912 800

CABINET OF DRAWINGS AND PRINTS

Booking
T +351 213 912 839/00

LIBRARY

Specialized in History of Art
Tuesday to Friday:
10am – 1pm / 2:30pm – 5pm
Free access (Wi-Fi)

RESTAURANT

Free access (Wi-Fi)

GARDEN

Free access (Wi-Fi)

GETTING HERE

Rua das Janelas Verdes
Bus 713, 714, 727
Av. 24 de Julho
Bus 728, 732, 760
Trams 15E, 18E
Largo de Santos
Tram 25E
GPS
38.704516
-9.162278



Restaurant



Toilets



Shop



Tickets / Cloakroom



Lift

© Direção-Geral do Património Cultural / Arquivo de Documentação Fotográfica (DGPC/ADF)

www.fba.pt

EN

MNAA

MUSEU NACIONAL DE ARTE ANTIGA

Museu Nacional de Arte Antiga
Rua das Janelas Verdes
1249-017 Lisboa, Portugal
T +351 213 912 800
geral@mnaa.dgpc.pt
www.museudearteantiga.pt
www.facebook.com/museunacionaldearteantiga

REPÚBLICA
PORTUGUESA
CULTURA

PATRIMONIO
CULTURAL
Direção-Geral do Património Cultural

MNAA
MUSEU NACIONAL DE ARTE ANTIGA

0

LEVEL

- A. TEMPORARY EXHIBITIONS GALLERY
 - B. TEMPORARY EXHIBITIONS GALLERY
 - C. LIBRARY
 - D. AUDITORIUM
 - E. CABINET OF DRAWINGS AND PRINTS
 - F. MEZANINO ROOM
- Temporary exhibitions



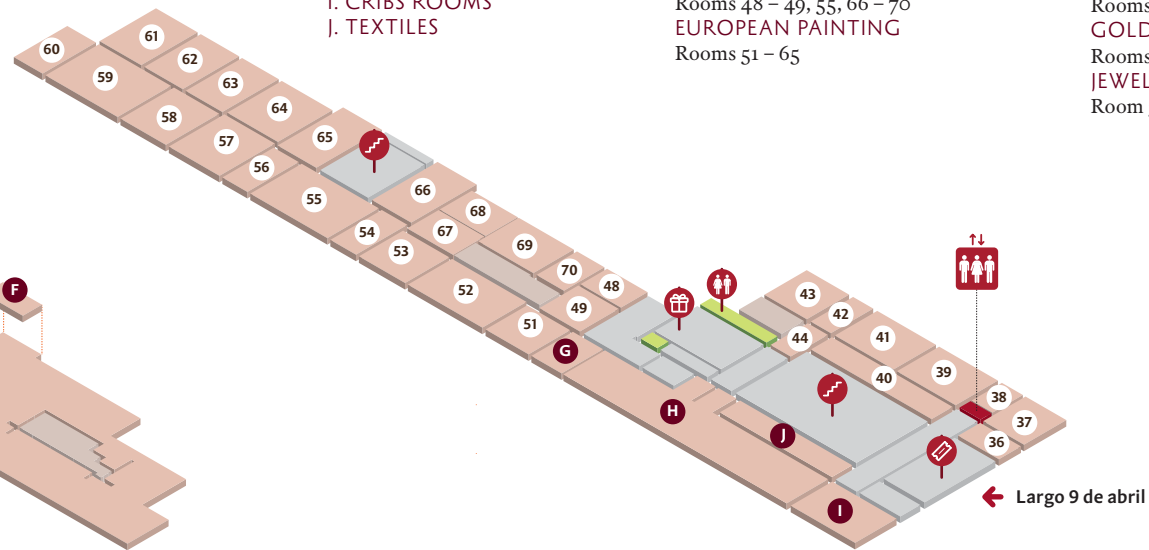
Rua das Janelas Verdes →

1

LEVEL

- G. TECTO PINTADO ROOM
- Temporary exhibitions
- H. SAINT ALBERT CHAPEL
- I. CRIBS ROOMS
- J. TEXTILES

- PORTUGUESE FURNITURE
- Rooms 36 – 44
- EUROPEAN DECORATIVE ARTS
- Rooms 48 – 49, 55, 66 – 70
- EUROPEAN PAINTING
- Rooms 51 – 65

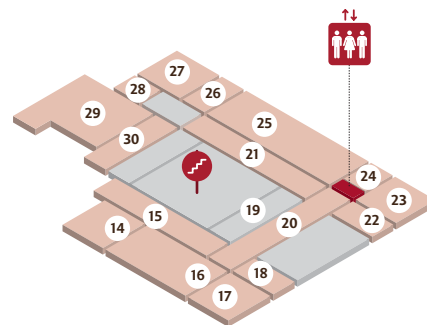


← Largo 9 de abril

2

LEVEL

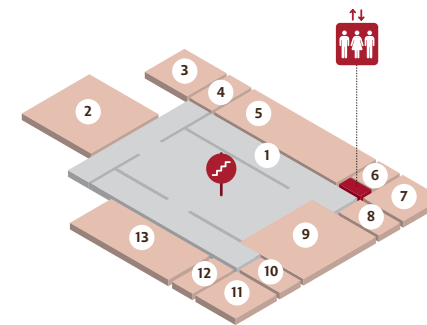
- ART FROM THE PORTUGUESE DISCOVERIES
- Rooms 14 – 18
- CERAMICS
- Rooms 19 – 25
- GOLD AND SILVERWARE
- Rooms 26 – 29
- JEWELLERY
- Room 30



3

LEVEL

- PORTUGUESE PAINTING AND SCULPTURE
- Rooms 1 – 13



Giovanni Battista Tiepolo
The Flight into Egypt,
1767-70
[level 1, room 52]



Pieter de Hooch
Merry Company,
ca. 1663-65
[level 1, room 54]



Andrea della Robbia
Saint Leonard, 1501-15
[level 1, room 55]



Francisco de Zurbarán
Saint Peter, 1633
[level 1, room 58]



Lucas Cranach, the Elder
Salome with the Head of Saint John the Baptist,
ca. 1510
[level 1, room 61]



Jheronimus Bosch
The Temptations of Saint Anthony Abbot, ca. 1500
[level 1, room 61]



Kano Naizen
Namban Screens
Japan, ca. 1600
[level 2, room 14]



Saltcellar
Benin, ca. 1525
[level 2, room 18]



Dish with Matias de Albuquerque coat of arms
China, 16th century
[level 2, room 21]



Domingos António de Sequeira
The Adoration of the Magi
1828
[level 3, room 1]



Nuno Gonçalves
Panels of Saint Vincent,
ca. 1470
[level 3, room 2]



Unknown Portuguese Master
Hell, ca. 1510-20
[level 3, room 5]



Albrecht Dürer
Saint Jerome, 1521
[level 1, room 61]



Piero della Francesca
Saint Augustine, 1460-70
[level 1, room 63]



Rafael Sanzio
A Miracle of Saint Eusebius of Cremona, ca. 1502-03
[level 1, room 63]



The Baptism of Christ
Brussels, 16th century
[level 1, room 64]



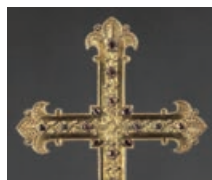
Pierre Bernard
Commode, France,
18th century
[level 1, room 68]



Ambroise-Nicolas Cousinet
Statuette, Paris, 1757-58
[level 1, room 69]



Processional Cross
Portugal, 1214
[level 2, room 29]



Gil Vicente
Belém Monstrance, 1506
[level 2, room 29]



Mestre João
Reliquary of Queen D. Leonor, ca. 1510
[level 2, room 29]



Two Headed Fountain
Portugal, 1501-15
[level 3, room 7]



Gregório Lopes
The Martyrdom of Saint Sebastian
Portugal, 1536-39
[level 3, room 9]



Cristóvão de Morais
Portrait of King D. Sebastião, 1571
[level 3, room 10]

